

ENVIRONMENTAL PROCESS CONTROL
 WATER AND WASTEWATER SYSTEM OPERATORS
 P.O. BOX 493
 SNOWMASS, CO 81654

SCOTT W. LESLIE
 970 983 8393

OAK MEADOWS MONTHLY REPORT:
 WATER

February 19, 2008

Location	4 Mile Well	Well 6	Well 9	Spring	Crossover
	2/19/08	2/19/08	2/19/08	2/19/08	2/19/08
Meter	14351000	72121300	26577100		17365800
Previous	13914000	72121300	26420500		17083000
Gallons	437000	0	156600	aprox. 1 gpm	283800

Notes:

- Well # 4 50 FT. 4 in.
- Well # 6 0 PSI
- Well # 8 -FT. - in.
- Well # 9 147' FT. 0 in.

Reeves Meter 6200

Notes:

Spring turned out.

Wastewater

Location	Influent
Date	2/19/08
Meter	30236967
Previous	29961388
Gallons	275679

NOTES:

Oak Meadows Ranch Water Use 2007-2008

TRIBUTARY DIVERSIONS									
	4-Mile Well #1				FILING 4 DIVERSION				
	Reading				Reading				
	Gallons	(AF)	(gpm)		Gallons	(AF)	(gpm)		%
Oct-07	11782000				16012600				
Nov	12686000	904000	2.774	20.93	16408400	395800	1.215	9.16	44%
Dec	13347000	661000	2.029	14.81	16693700	285300	0.876	6.39	43%
Jan-08	13914000	567000	1.740	12.70	17083000	389300	1.195	8.72	69%
Feb	14351000	437000	1.341	10.84	17366800	283800	0.871	7.04	65%
Mar	0	0	-	-	0	0	-	-	
Apr	0	0	-	-	0	0	-	-	
May	0	0	-	-	0	0	-	-	
Jun	0	0	-	-	0	0	-	-	
Jul	0	0	-	-	0	0	-	-	
Aug	0	0	-	-	0	0	-	-	
Sep	0	0	-	-	0	0	-	-	
Oct	0	0	-	-	0	0	-	-	
		7.885			4.156				

*New Meter

NONTRIBUTARY DIVERSIONS										4MileWell	Total Filing 3 & 4		
	Motz Well No. 6				Oak Meadows Well No. 9				Total		Diversion	Divisions	
	Reading				Reading								
	Gallons	(AF)	(gpm)		Gallons	(AF)	(gpm)	(AF)	(gpm)	(AF)	(AF)	(gpm)	
Oct-07	72121300				25738600								
Nov	72121300	0	-	-	25986700	248100	0.76	5.74	0.76	5.74	1.21	1.98	14.91
Dec	72121300	0	-	-	26176900	190200	0.58	4.26	0.58	4.26	0.88	1.46	10.65
Jan-08	72121300	0	-	-	26420500	243600	0.75	5.46	0.75	5.46	1.19	1.94	14.18
Feb	72121300	0	-	-	26577100	156600	0.48	3.88	0.48	3.88	0.87	1.35	10.92
Mar	0	0	-	-	0	0	-	-	-	-	-	-	-
Apr	0	0	-	-	0	0	-	-	-	-	-	-	-
May	0	0	-	-	0	0	-	-	-	-	-	-	-
Jun	0	0	-	-	0	0	-	-	-	-	-	-	-
Jul	0	0	-	-	0	0	-	-	-	-	-	-	-
Aug	0	0	-	-	0	0	-	-	-	-	-	-	-
Sep	0	0	-	-	0	0	-	-	-	-	-	-	-
Oct	0	0	-	-	0	0	-	-	-	-	-	-	-
		-			2.57				2.57		4.16	6.73	

Fourmile Well No. 1 Augmentation Requirements - Assuming Buildout of Filing 2 and Filing 3, Block 1

Oak Meadows Subdivision Water Use Accounting Form For Case No. 92CW350

WATER YEAR: 2007-2008

<u>Units connected to the OMSCO Water System</u>		<u>Potential Units connected to the OMSCO Water System</u>	
Filing 2 / OMWA	32	32 single family homes in Filing 2 and Filing 3, Block 1	
Filing 1	0	1 single family home on 2 lots in Filing 1 (Reeves)	
Filing 3, Blks 2 & 3	15	15 single family homes in Filing 3, Blocks 2 and 3	
Filing 4, Area IV	32	32 townhomes in Filing 4, Area IV	
Filing 4, Area V	20	20 single family homes in Filing 4, Area V	
Filing 4, Area II	10	11 townhomes in Filing 4, Area II (Beaver Court)	
Filing 4-B, low irrigation	19	45 single family homes in Filing 4-B with 750 sq.ft. irrigation per unit	
Filing 4-B, high irrigation	19	40 single family homes in Filing 4-B with 1400 sq.ft. irrigation per unit	
5 users outside Oak Meadows	0	5 users outside Oak Meadows	
TOTAL	147	201 total potential units	

Unit Count Directions

At the beginning of each water year, which begins Nov. 1, count the number of units served by the water system and estimate the number of units that will be constructed over the next 12 months. Enter the totals in the appropriate boxes at the right.

The unit count is used to calculate the monthly consumptive use of the units served by the water system. This is shown in column 14 below.

Column No.	1	2	3	4	5	6	7	8	9	10	11	12	13	14	15	16	17	18
Month	Diversions												Total Calculated Depletion (AF)	Stream Depletion from tributary sources (AF)	Martin Reservoir Release schedule		Comments / Notes	
	Sources Tributary to Fourmile Creek					Not-tributary sources									% from tributary sources	(AF)		(gpm)
	FMW # 1		Filing 2 springs		Total	Well # 6		Well # 8		Well # 9		Total						
	(gal)	(AF)	(gal)	(AF)	(AF)	(gal)	(AF)	(gal)	(AF)	(gal)	(AF)	(AF)						
Nov	904000	2.77		0.00	2.77	0	0.00		0.00	248100	0.76	0.76	78.5%	0.39	0.30	0.35	2.56	
Dec	661000	2.03		0.00	2.03	0	0.00		0.00	190200	0.58	0.58	77.7%	0.40	0.31	0.36	2.61	
Jan	567000	1.74		0.00	1.74	0	0.00		0.00	243600	0.75	0.75	69.9%	0.40	0.27	0.31	2.28	
Feb	437000	1.34		0.00	1.34	0	0.00		0.00	156600	0.48	0.48	73.6%	0.36	0.27	0.31	2.24	
Mar	0	0.00		0.00	0.00	0	0.00		0.00	0	0.00	0.00	0.0%	0.40	0.00	0.00	0.00	
Apr	0	0.00		0.00	0.00	0	0.00		0.00	0	0.00	0.00	0.0%	0.62	0.00	0.00	0.00	
May*	0	0.00		0.00	0.00	0	0.00		0.00	0	0.00	0.00	0.0%	2.85	0.00	0.00	0.00	
Jun*	0	0.00		0.00	0.00	0	0.00		0.00	0	0.00	0.00	0.0%	3.59	0.00	0.00	0.00	
Jul*	0	0.00		0.00	0.00	0	0.00		0.00	0	0.00	0.00	0.0%	3.40	0.00	0.00	0.00	
Aug*	0	0.00		0.00	0.00	0	0.00		0.00	0	0.00	0.00	0.0%	2.30	0.00	0.00	0.00	
Sep	0	0.00		0.00	0.00	0	0.00		0.00	0	0.00	0.00	0.0%	2.02	0.00	0.00	0.00	
Oct	0	0.00		0.00	0.00	0	0.00		0.00	0	0.00	0.00	0.0%	0.81	0.00	0.00	0.00	
% from	2569000	7.88	0	0.00	7.88	0	0.00	0	0.00	838500	2.57	2.57		17.54	1.15	1.33		

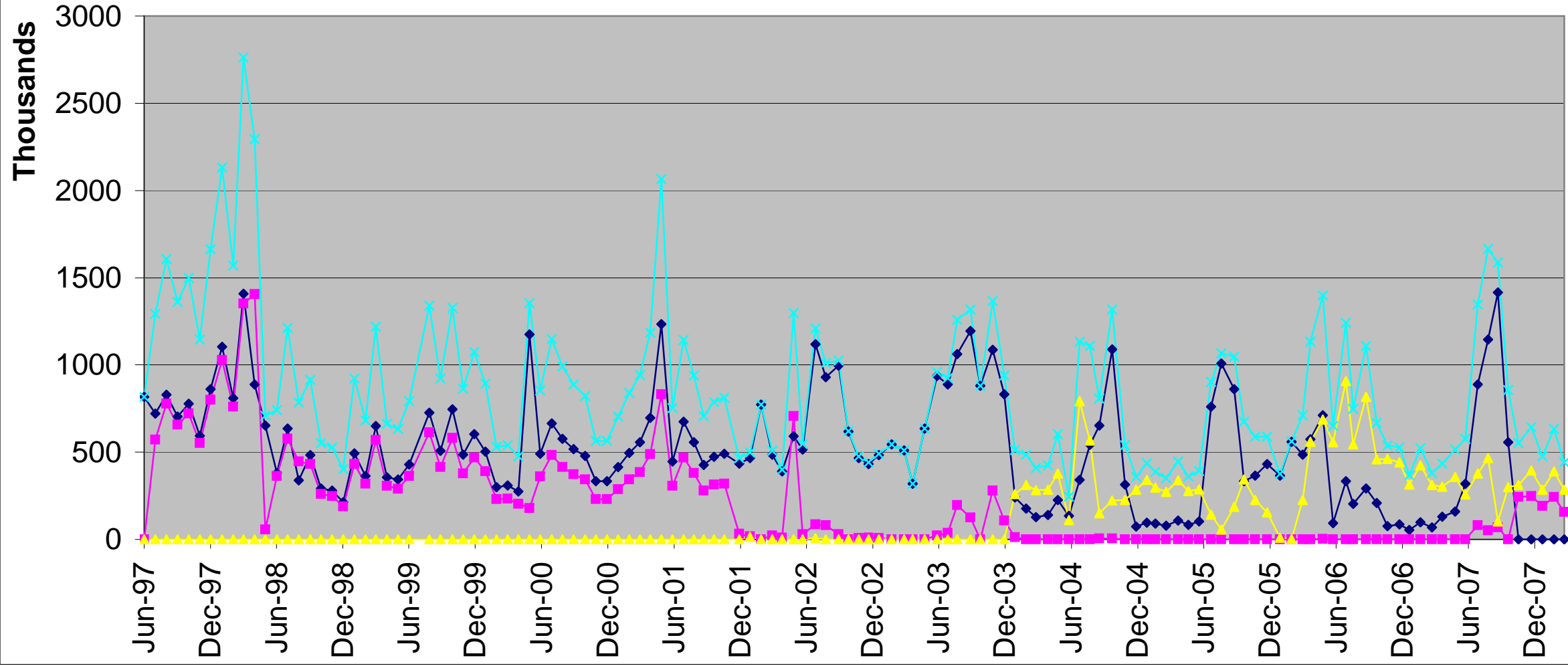
Monthly Well reading Directions

*Meter Broken These are estimates

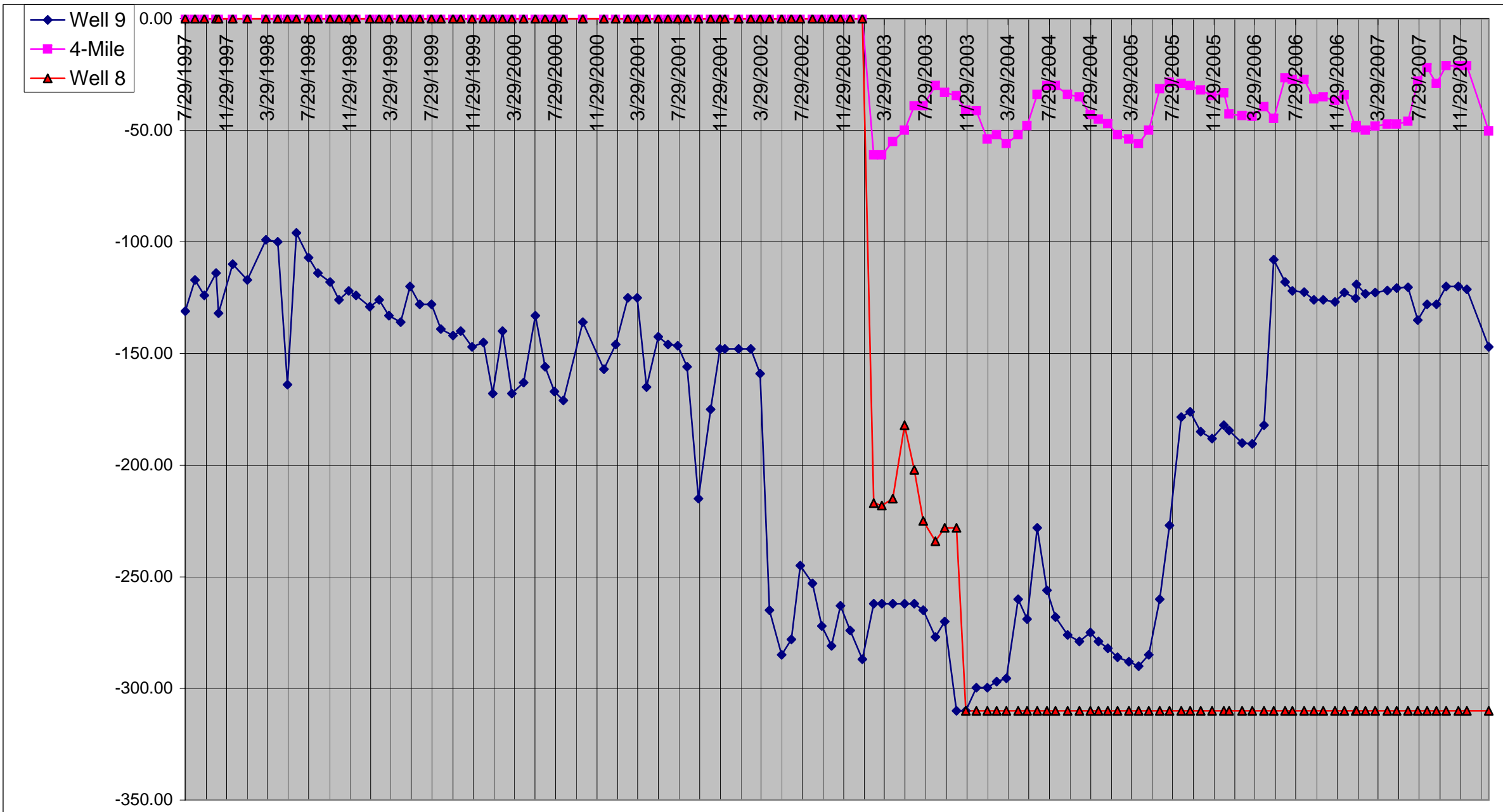
Read the meter on the wells and the OMWA spring on the last day of the month and enter the gallons used in column 1, 3, 6, 8, or 10 as appropriate.

All others columns calculate automatically.

OMSCO Water Use By Source

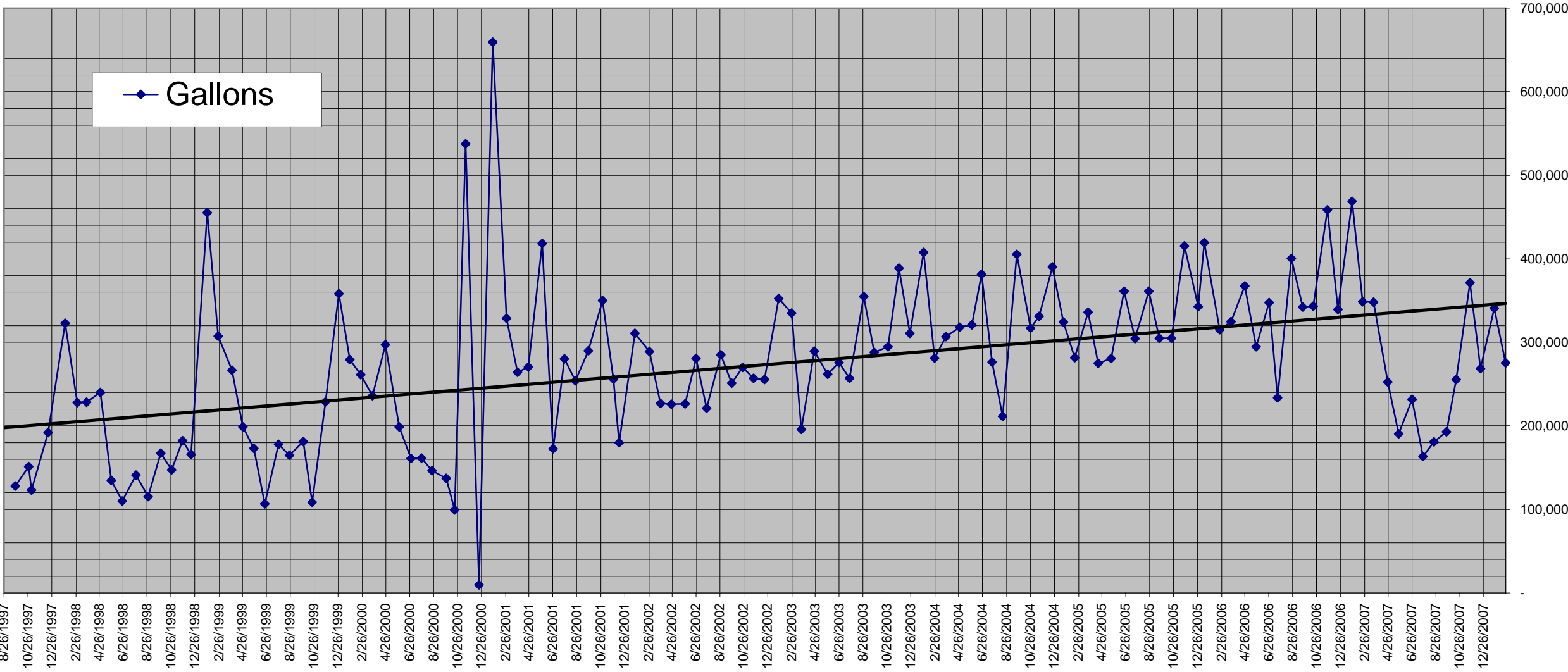


Depth to Water Of Oak Meadows Wells



Well 9 Depth 580'
 Pump @ -577'
 Readings < -300 = N/A'

Oak Meadows WWTP Influent Flow



OMSCO WWTP Capacity Thresholds

