

**ENVIRONMENTAL PROCESS CONTROL  
WATER AND WASTEWATER SYSTEM OPERATORS  
P.O. BOX 493  
SNOWMASS, CO 81654**

**SCOTT W. LESLIE  
970 963 8393**

**OAK MEADOWS MONTHLY REPORT:  
WATER**

**November 17, 2004**

<b>Location</b>	<b>4 Mile Well</b>	<b>Well 6</b>	<b>Well 9</b>	<b>Spring</b>	<b>Crossover</b>
	11/17/04	11/17/04	11/17/04	11/17/04	11/17/04
<b>Meter</b>	20844500	58980000	25289000		3889900
<b>Previous</b>	20385000	58905300	25289000		3606100
<b>Gallons</b>	459500	74700	0	0	283800

**Notes:**

Well # 4 43 FT. 6 in.

Well # 6 0 PSI

Well # 8 - FT. - in.

Well # 9 275 Ft. 2 In.

Reeves Meter 26000

**Notes:**

Unable to read wells 6 & 8

Slab poured for well house and building ordered.

**Wastewater**

<b>Location</b>	<b>Influent</b>
<b>Date</b>	11/17/04
<b>Meter</b>	17835037
<b>Previous</b>	17504050
<b>Gallons</b>	330987

**NOTES:**

Installed new bar screen supplied by manufacturer.(warrantied)

Oak Meadows Ranch Water Use 2004-2005

TRIBUTARY DIVERSIONS							
4-Mile Well #1				FILING 4 DIVERSION			
Reading	Gallons	(AF)	(gpm)	Reading	Gallons	(AF)	(gpm)
Oct-04	20385000			3606100			
Nov	20844500	459500	1.410	3889900	283800	0.871	6.57
Dec	0	0	-	0	0	-	-
Jan	0	0	-	0	0	-	-
Feb	0	0	-	0	0	-	-
Mar	0	0	-	0	0	-	-
Apr	0	0	-	0	0	-	-
May	0	0	-	0	0	-	-
Jun	0	0	-	0	0	-	-
Jul	0	0	-	0	0	-	-
Aug	0	0	-	0	0	-	-
Sep	0	0	-	0	0	-	-
Oct	0	0	-	0	0	-	-
		1.410				0.871	

\*New Meter

NONTRIBUTARY DIVERSIONS										4MileWell	Total Filing 3 & 4	
Motz Well No. 6				Oak Meadows Well No. 9				Total		Diversion	Divisions	
Reading	Gallons	(AF)	(gpm)	Reading	Gallons	(AF)	(gpm)	(AF)	(gpm)	(AF)	(AF)	(gpm)
Oct-04	58905300			25289000								
Nov	58980000	74700	0.23	25289000	0	-	-	0.23	1.73	0.87	1.10	8.30
Dec	0	0	-	0	0	-	-	-	-	-	-	-
Jan	0	0	-	0	0	-	-	-	-	-	-	-
Feb	0	0	-	0	0	-	-	-	-	-	-	-
Mar	0	0	-	0	0	-	-	-	-	-	-	-
Apr	0	0	-	0	0	-	-	-	-	-	-	-
May	0	0	-	0	0	-	-	-	-	-	-	-
Jun	0	0	-	0	0	-	-	-	-	-	-	-
Jul	0	0	-	0	0	-	-	-	-	-	-	-
Aug	0	0	-	0	0	-	-	-	-	-	-	-
Sep	0	0	-	0	0	-	-	-	-	-	-	-
Oct	0	0	-	0	0	-	-	-	-	-	-	-
		0.23				-		1.10		0.87	1.10	

# Fourmile Well No. 1 Augmentation Requirements - Assuming Buildout of Filing 2 and Filing 3, Block 1

## Oak Meadows Subdivision Water Use Accounting Form For Case No. 92CW350

WATER YEAR: 2004-2005

<u>Units connected to the OMSCO Water System</u>		<u>Potential Units connected to the OMSCO Water System</u>
Filing 2 / OMWA	32	32 single family homes in Filing 2 and Filing 3, Block 1
Filing 1	0	1 single family home on 2 lots in Filing 1 (Reeves)
Filing 3, Blks 2 & 3	15	15 single family homes in Filing 3, Blocks 2 and 3
Filing 4, Area IV	32	32 townhomes in Filing 4, Area IV
Filing 4, Area V	20	20 single family homes in Filing 4, Area V
Filing 4, Area II	9	11 townhomes in Filing 4, Area II (Beaver Court)
Filing 4-B, low irrigation	12	45 single family homes in Filing 4-B with 750 sq.ft. irrigation per unit
Filing 4-B, high irrigation	8	40 single family homes in Filing 4-B with 1400 sq.ft. irrigation per unit
5 users outside Oak Meadows	0	5 users outside Oak Meadows
<b>TOTAL</b>	<b>128</b>	201 total potential units

### Unit Count Directions

At the beginning of each water year, which begins Nov. 1, count the number of units served by the water system and estimate the number of units that will be constructed over the next 12 months. Enter the totals in the appropriate boxes at the right.

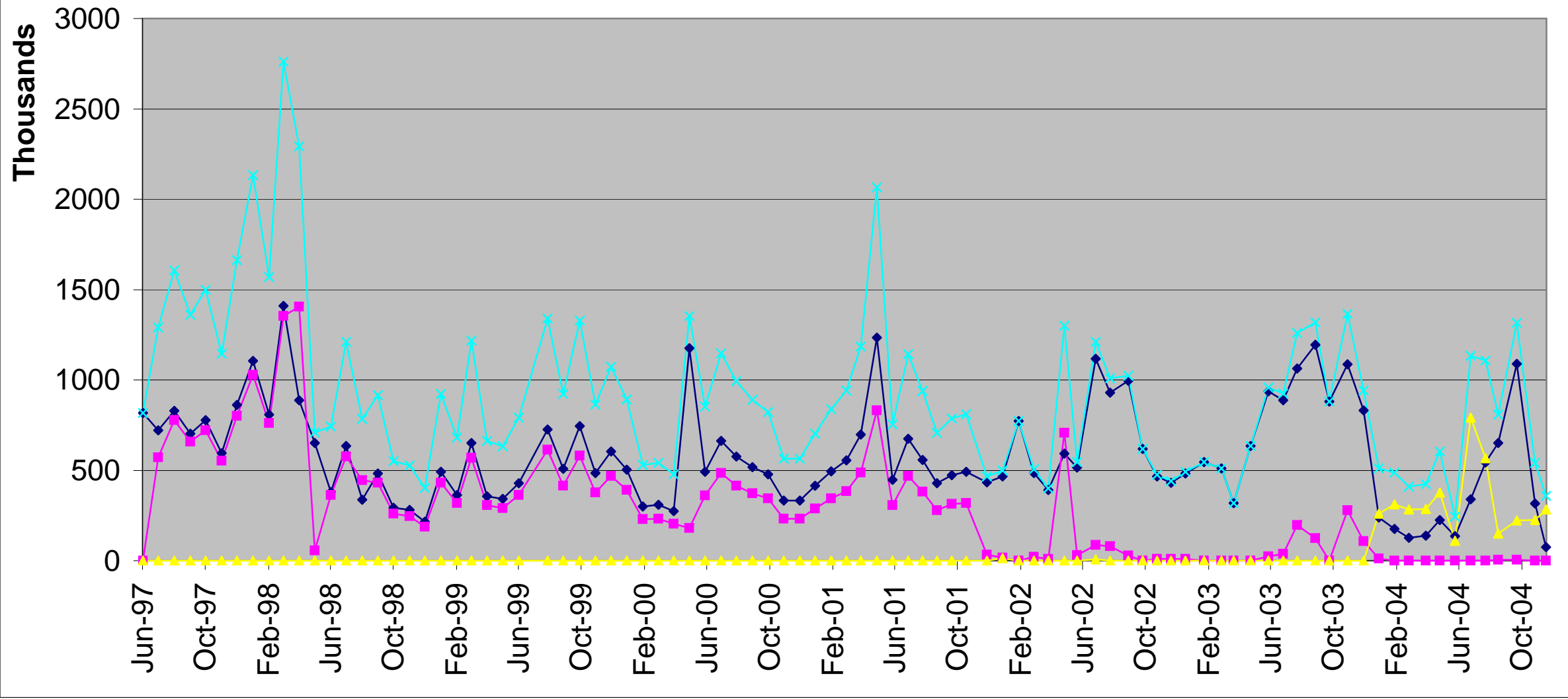
The unit count is used to calculate the monthly consumptive use of the units served by the water system. This is shown in column 14 below.

Column No.	1	2	3	4	5	6	7	8	9	10	11	12	13	14	15	16	17	18
Month	Diversions												Total Calculated Depletion (AF)	Stream Depletion from tributary sources (AF)	Martin Reservoir Release schedule		Comments / Notes	
	Sources Tributary to Fourmile Creek					Not-tributary sources									% from tributary sources			
	FMW # 1		Filing 2 springs		Total	Well # 6		Well # 8		Well # 9		Total						
	(gal)	(AF)	(gal)	(AF)	(AF)	(gal)	(AF)	(gal)	(AF)	(gal)	(AF)	(AF)						
Nov	459500	1.41		0.00	1.41	74700	0.23		0.00	0	0.00	0.23	86.0%	0.35	0.30	0.35	2.52	
Dec	0	0.00		0.00	0.00	0	0.00		0.00	11500	0.04	0.04	0.0%	0.36	0.00	0.00	0.00	
Jan	0	0.00		0.00	0.00	0	0.00		0.00	0	0.00	0.00	0.0%	0.36	0.00	0.00	0.00	
Feb	0	0.00		0.00	0.00	0	0.00		0.00	0	0.00	0.00	0.0%	0.33	0.00	0.00	0.00	
Mar	0	0.00		0.00	0.00	0	0.00		0.00	0	0.00	0.00	0.0%	0.36	0.00	0.00	0.00	
Apr	0	0.00		0.00	0.00	0	0.00		0.00	100	0.00	0.00	0.0%	0.56	0.00	0.00	0.00	
May	0	0.00		0.00	0.00	0	0.00		0.00	0	0.00	0.00	0.0%	2.64	0.00	0.00	0.00	
Jun	0	0.00		0.00	0.00	0	0.00		0.00	0	0.00	0.00	0.0%	3.32	0.00	0.00	0.00	
Jul	0	0.00		0.00	0.00	0	0.00		0.00	0	0.00	0.00	0.0%	3.14	0.00	0.00	0.00	
Aug	0	0.00		0.00	0.00	0	0.00		0.00	5700	0.02	0.02	0.0%	2.13	0.00	0.00	0.00	
Sep	0	0.00		0.00	0.00	0	0.00		0.00	5400	0.02	0.02	0.0%	1.86	0.00	0.00	0.00	
Oct	0	0.00		0.00	0.00	0	0.00		0.00	0	0.00	0.00	0.0%	0.74	0.00	0.00	0.00	
% from	459500	1.41	0	0.00	1.41	74700	0.23	0	0.00	22700	0.07	0.30		16.14	0.30	0.35		

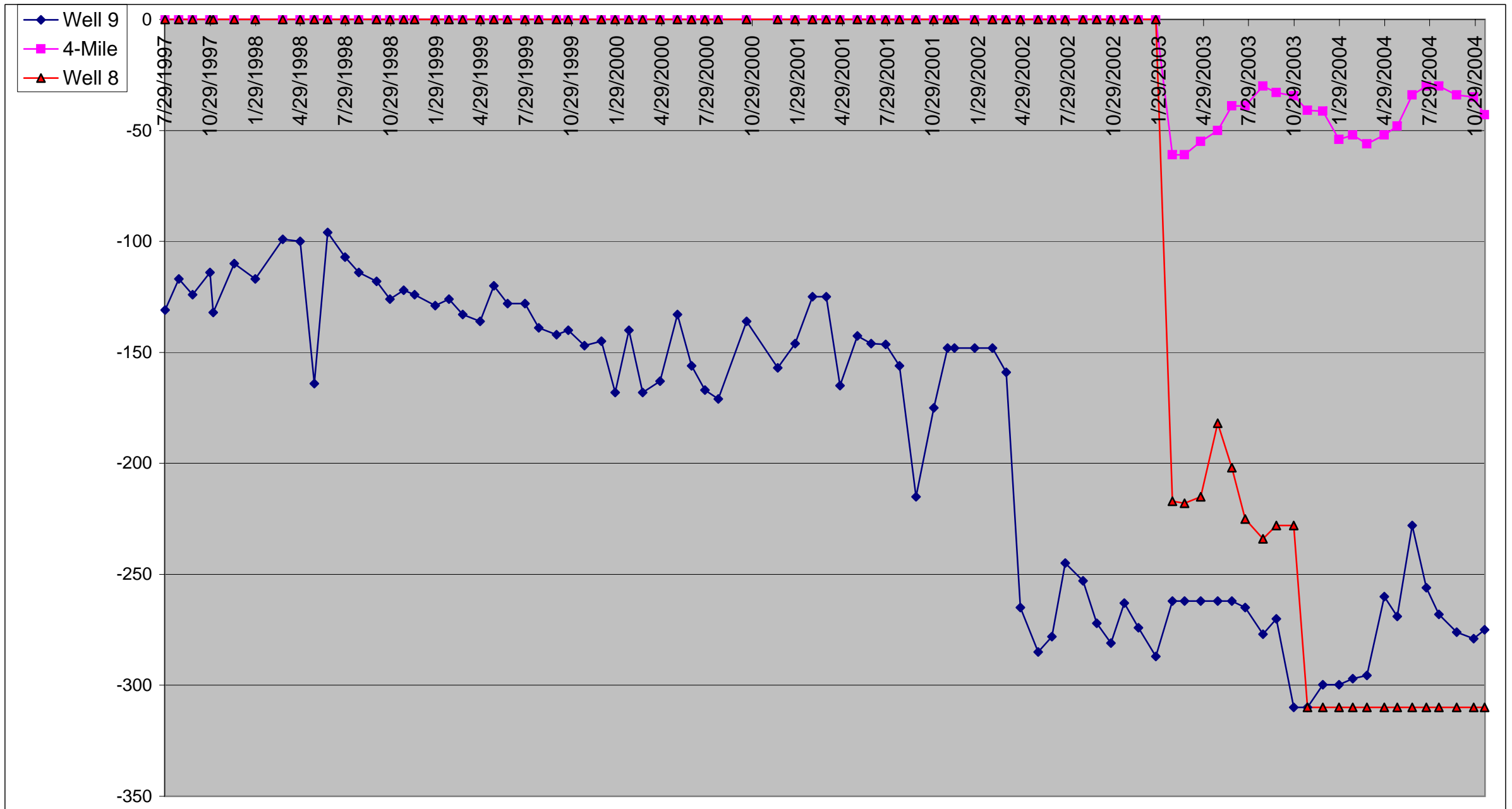
### Monthly Well reading Directions

Read the meter on the wells and the OMWA spring on the last day of the month and enter the gallons used in column 1, 3, 6, 8, or 10 as appropriate. All others columns calculate automatically.

# OMSCO Water Use By Source



### Depth to Water Of Oak Meadows Wells



Well 9 Depth 580'  
 Pump @ -577'  
 Readings < -300 = N/A'

11/23/2004

# Oak Meadows WWTP Influent Flow

◆ Gallons

